

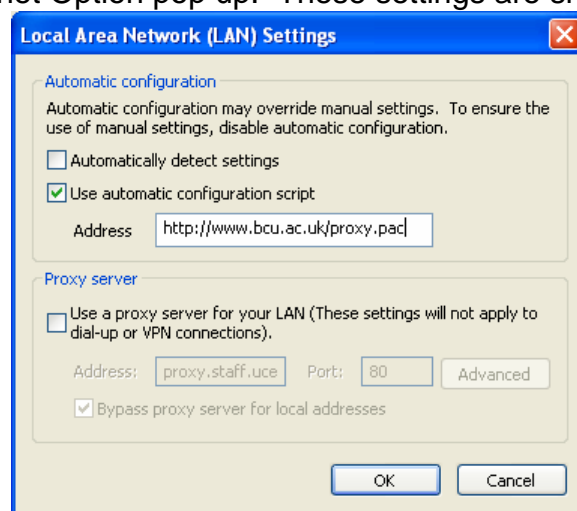
Mary Seacole Library Open Access Network Instructions

Web Browser Settings (Microsoft Internet Explorer)

To allow you access to the internet through the Open Access Network you need to make changes to your Web Browser's settings so that you can connect to the internet. You will also need your Birmingham City University network ID and password.

The instructions that follow are based on making the changes to Microsoft Internet Explorer but the principle is the same for other web browsers.

1. From the Start menu, select the Control Panel and double click the Internet Options icon. (This step only changes the settings for Microsoft Internet Explorer)
2. Click the Connections tab and then click the LAN Settings button towards the bottom.
3. If you already have a proxy setting in the Proxy Server section of the pop up and there is a tick box next to the "Use a proxy server for your LAN" then un-tick the box.
4. In the Automatic configuration section put a tick in the box next to "Use automatic configuration script" and enter **http://www.bcu.ac.uk/proxy.pac** in the text field.
5. Click on the OK button to close this pop up and click on the OK button to close the Internet Option pop up. These settings are shown below.



For assistance please go to the [Reference Enquiry Desk](#).

Alternatively visit www.resnet.bcu.ac.uk for instructions and advice.

When you have finished using the Open Access Network you should be able to go back to the previous setting by un-ticking the "Use Automatic configuration script" box (you can leave the text in the field) and tick the "Use a proxy server for your LAN" box so leaving the settings there for the next time you wish to use the Mary Seacole Library Open Access Network..

You should now be ready to use the Open Access Network, run your Web Browser and enter the web sites address. When prompted for a user id and password enter your Birmingham City University Network id and password.

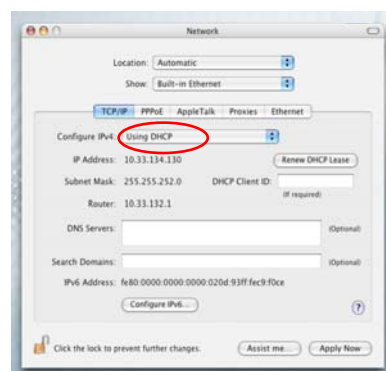
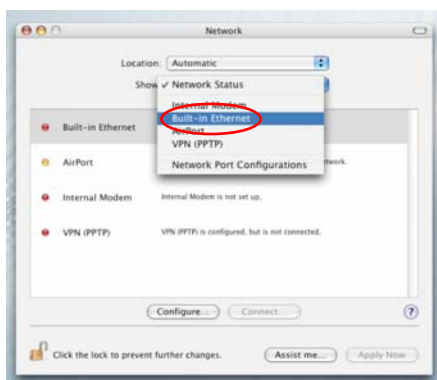
Mary Seacole Library Open Access Network Instructions

Web Browser Settings (Mac OS X 10.3.9)

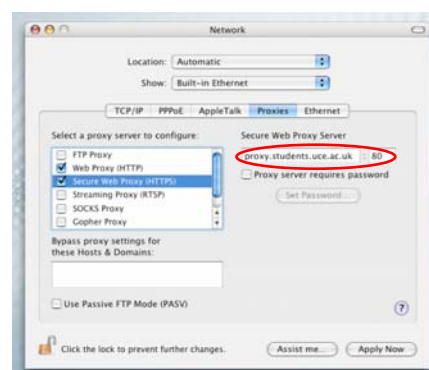
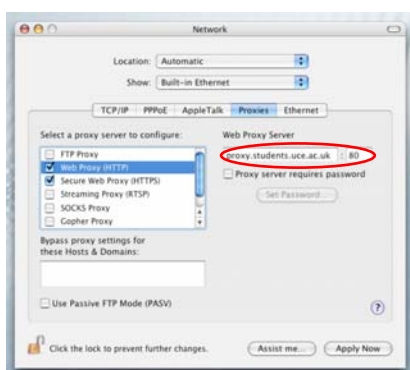
1. From the Apple menu, select the 'Systems Preferences' option, and the 'Network' icon.



2. Select 'Built-in Ethernet' from the 'Network' options. Select the 'TCP/IP' tab and ensure 'Using DHCP' is selected against Configure IPv4.



3. Select the 'Proxies' tab. Tick the 'Web Proxy (HTTP)' and 'Secure Web Proxy (HTTPS)' options, entering **proxy.students.bcu.ac.uk** and port **80** against each.



4. Open your Web Browser and enter the web site's address. When prompted for a user id and password enter your Birmingham City University Network id and password.